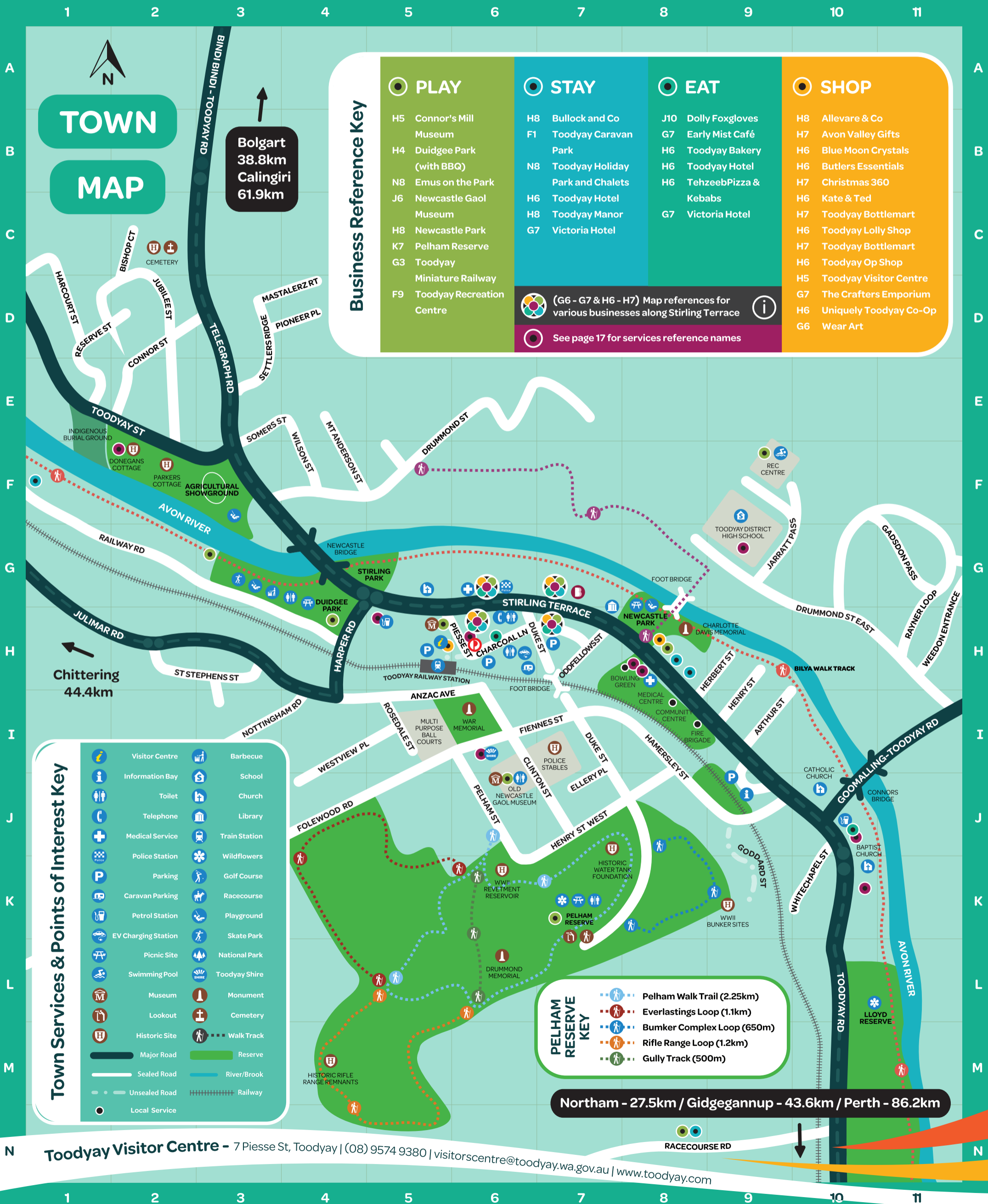


Visitor Information Map

Shire of Toodyay



TOWN

MAP

Bolgart
38.8km
Calingiri
61.9km

Business Reference Key

PLAY

- H5 Connor's Mill Museum
- H4 Duidgee Park (with BBQ)
- N8 Emus on the Park
- J6 Newcastle Gaol Museum
- H8 Newcastle Park
- K7 Pelham Reserve
- G3 Toodyay Miniature Railway
- F9 Toodyay Recreation Centre

STAY

- H8 Bullock and Co
- F1 Toodyay Caravan Park
- N8 Toodyay Holiday Park and Chalets
- H6 Toodyay Hotel
- H8 Toodyay Manor
- G7 Victoria Hotel

EAT

- J10 Dolly Foxgloves
- G7 Early Mist Café
- H6 Toodyay Bakery
- H6 Toodyay Hotel
- H6 TehzeebPizza & Kebabs
- G7 Victoria Hotel

SHOP

- H8 Allevarez & Co
- H7 Avon Valley Gifts
- H6 Blue Moon Crystals
- H6 Butlers Essentials
- H7 Christmas 360
- H6 Kate & Ted
- H7 Toodyay Bottlemart
- H6 Toodyay Lolly Shop
- H7 Toodyay Bottlemart
- H6 Toodyay Op Shop
- H5 Toodyay Visitor Centre
- G7 The Crafters Emporium
- H6 Uniquely Toodyay Co-Op
- G6 Wear Art

(G6 - G7 & H6 - H7) Map references for various businesses along Stirling Terrace

See page 17 for services reference names

Town Services & Points of Interest Key

- | | | | |
|--|---------------------|--|---------------|
| | Visitor Centre | | Barbecue |
| | Information Bay | | School |
| | Toilet | | Church |
| | Telephone | | Library |
| | Medical Service | | Train Station |
| | Police Station | | Wildflowers |
| | Parking | | Golf Course |
| | Caravan Parking | | Racecourse |
| | Petrol Station | | Playground |
| | EV Charging Station | | Skate Park |
| | Picnic Site | | National Park |
| | Swimming Pool | | Toodyay Shire |
| | Museum | | Monument |
| | Lookout | | Cemetery |
| | Historic Site | | Walk Track |
| | Major Road | | Reserve |
| | Sealed Road | | River/Brook |
| | Unsealed Road | | Railway |
| | Local Service | | |

- #### PELHAM RESERVE KEY
- Pelham Walk Trail (2.25km)
 - Everlastings Loop (1.1km)
 - Bunker Complex Loop (650m)
 - Rifle Range Loop (1.2km)
 - Gully Track (500m)

Northam - 27.5km / Gidgegannup - 43.6km / Perth - 86.2km

Toodyay Visitor Centre - 7 Piesse St, Toodyay | (08) 9574 9380 | visitorscentre@toodyay.wa.gov.au | www.toodyay.com